

# Reference Information for Green Team Members

## 1. SCW's Executive Golf Course's Phone Numbers & Addresses

- Stardust at 623-544-6012
  - 12702 Stardust Blvd.
- Desert Trails at 623-544-6017
  - 22525 N. Executive Way
- Echo Mesa at 623-544-6014
  - 20349 Echo Mesa Dr.

## 2. Pro-Shop Kiosks and RCSCW Website [suncitywest.com](http://suncitywest.com)>Golf:

Please refer to these areas for valuable information such as: Golf Course Maintenance Schedules, Golf Course maps & layouts, Golf Rates, Golf Tournaments Schedule, Tee Time Reservations, Golf Course Local Rules, Lessons, Clinics, E-News and more.

## 3. Green Team's Weekly Schedule, Newsletters, How to Reserve a GT Tee Time

Please refer to the RCSCW website at [suncitywest.com](http://suncitywest.com) >Golf >Green Team.

## 4. Dress Code

*Updated Golf Policy September 2017*

### **DRESS CODE FOR GOLF IN THE REC CENTERS OF SUN CITY WEST**



**Male** – Shirts with sleeves to at least mid-bicep is required. Non-conforming clothing includes but not limited to tank tops, sleeveless shirts, and swimwear.  
Slacks/shorts – shorts must be mid-thigh in length or longer.

**Female** – Shirts may be with or without collars and sleeves. Shirts must be non-revealing in nature. No spaghetti straps, fishnet, tube tops, halters, midriff exposing tops, swimwear, or the like.  
Slacks, Shorts and Skirts – Shorts/Skirts must be mid-thigh in length or longer.

**Footwear** – Proper footwear is required to be worn on the golf course and practice facility. Spikeless/soft spike golf shoes, golf sandals, flat soled shoes are examples of proper footwear. Any footwear that would damage the greens is strictly prohibited. Shoes **MUST** be worn in the pro-shop due to the AZ Department of Health regulations.

All clothing must be hemmed and free of holes and tears. Any clothing displaying profanity, inappropriate wording or controversial messages will not be considered appropriate. If in doubt, the final determination of appropriate clothing will be determined by the golf shop staff on duty. Players must comply with their judgment.

The Dress Code for Golf in the Rec Centers of Sun City West can also be found on the SCW website, at each of the 7 golf courses, or Golf Operations office.

## 5. Golf Cart (motorized-gas or electric) Rules:

With the purpose of maximizing our golfer's enjoyment and minimizing the cart traffic on the seven RCSCW golf courses, the following motorized cart policy was implemented beginning Wednesday, June 1st, 2022:

### **New Motorized Cart Rules Beginning June 1st, 2022**

**Single golfer** – 1 cart – either a two person or one person cart.

**Twosome** – (1) two-person cart or (1) two-person cart and a (1) one-person cart or (2) one-person carts.

**Threesome** – (2) two-person carts or (1) two-person cart and a (1) one-person cart or (1) two-person cart and (2) one-person carts or (3) one-person carts.

**Foursome** – (2) two-person carts or (1) two-person cart and (2) one-person carts or (1) two-person cart and (3) one-person carts or (4) one-person carts or (2) two-person carts with (1) one-person cart.

**Maximum group size per tee time – Four Players (no fivesomes are allowed)**  
**Medical Flag Participants** will be asked to pair up with golfers in their group to comply with rules above.

If there is a walker/pull cart user in the group, subtract walker/pull cart golfer(s) from group size to get appropriate number of motorized carts in group.

**Definitions: Two-Person Cart = 2 seats with 4 tires. One-Person Cart = 1 seat with 2 or 3 tires.**

**Gas or Electric** golf carts are allowed on all RCSCW golf courses.

## 6. Medical Flags:



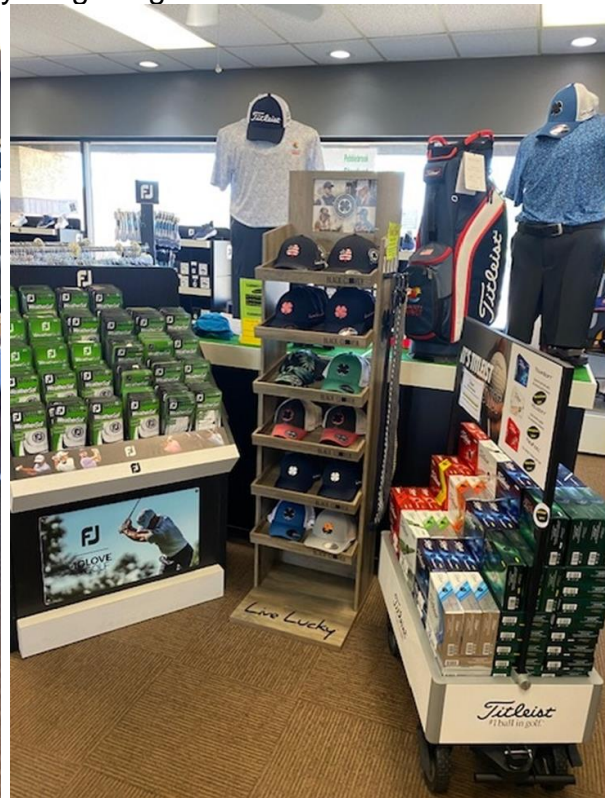
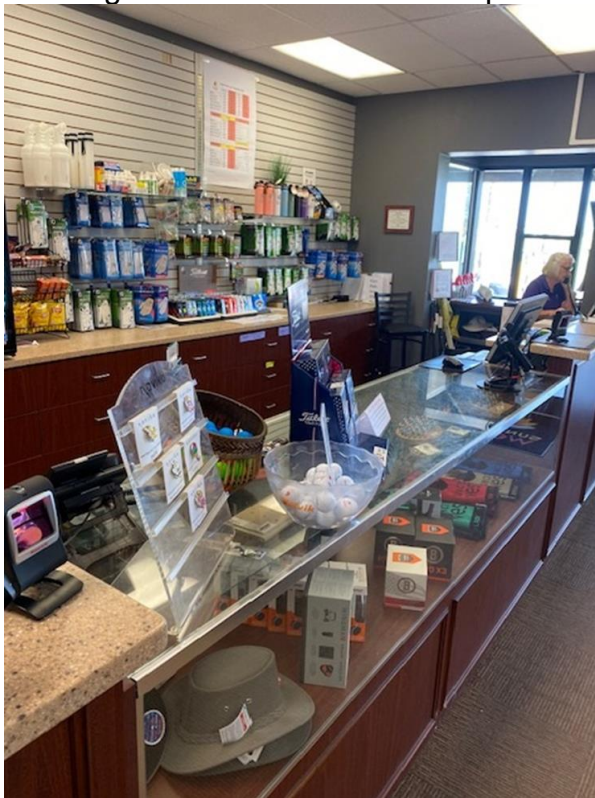
- RCSCW provides a medical flag authorization program to individuals who, due to health conditions, require additional help to comfortably complete a round of golf.
- A medical flag allows the golfer to drive the cart **no closer than 15 feet** of the greens and tees while other golfers may be **no closer than 30 feet** of greens and tees.
- The medical flag does **not** entitle the golfer to drive into bunkers, desert areas, water hazards or casual water areas. Carts are **not** allowed on the fringe or apron of the green or to be driven between greenside bunkers and the green.
- To obtain a Medical Flag, take a medical note from your doctor or your ADOT placard card to the Golf Operations Office at Pebblebrook Golf Course. They will put a sticker on the back of your Rec Card. Show your Rec Card to the starter when checking in to play golf and they will issue you a Medical Flag to put on your cart. This allows you to drive within **15 feet** of the green versus 30 feet without the flag. This is the only advantage of the Medical Flag.
- Medical flag participants will be asked to pair up with other golfers in their group to comply with the motorized golf cart rules.
- Medical flags are to be placed in the rear of the golf cart so that is clearly visible.
- Return golf flags to the pro-shop at completion of play.

## 7. Range Balls:

- Range ball machines are at all 7 RCSCW golf courses. Range Ball Cards can be purchased from any of the 7 RCSCW golf pro-shops. The cards are \$90.00 for \$180.00 worth of balls. Range ball cards have no expiration date. Bring your rec card with you when purchasing. You may purchase a ticket in the pro-shop or put cash directly in the machine. A small bucket (approx. 30 balls) is \$3.00 and a large bucket (approx. 60 balls) is \$6.00.
- Driving ranges are typically open 7 days a week from dawn to dusk. The driving range closes early from time to time on a Wednesday or Thursday to do a clean pick and mow. If the range is closed, you can drive to another nearby course. Course closures vary throughout the year so please check out our course maintenance schedule located online or in the pro-shop kiosks.
- Range balls and baskets are the property of the golf courses and **are not to be removed from the course at any time.** Please leave any unused range balls on the driving range.

## 8. GRANDVIEW PRO SHOP

- Grandview Golf Course, 14260 Meeker Blvd., SCW 85375, 623-544-6013
- The largest RCSCW Golf Pro Shop for all your golfing needs.



## 9. About “DA Golf LAB” located at Grandview Golf Course in Sun City West:



# Grip & Club Repair Services

- Grip Repair
- Club Repair
- Fittings
- Instruction

*Stop by and see Dave Arend  
Monday through Saturday*

*The right equipment, in good  
repair, makes a difference.*



- preowned golf equipment that you can try out on Grandview’s practice areas
- demos of both new and preowned equipment that you can try
- indoor Simulator that can be rented at \$15.00 for 45 minutes
- information for golfers of all levels, new or experienced
- club repairs
- new golf grips

Dave Arend, Owner, Golf Instructor & Equipment Specialist  
Grandview Golf Course, 14260 Meeker Blvd., SCW 85375  
office: 623-544-6577, Email: [Arendgolf@gmail.com](mailto:Arendgolf@gmail.com)

Along with the In-House Lessons offered to the Green Team by RCSCW’s PGA Professionals, we also have this wonderful Golf Lab at our disposal. Green Teamers should visit DA Golf Lab and check it out for yourselves!

## 10. SPECTATOR Policy



### Spectator Registration

By signing this form you acknowledge the risk that being \_\_\_\_\_ Date: \_\_\_\_\_  
on a golf course may expose you to: hit by golf ball, golf  
club, struck by golf course equipment, trip and fall, etc. In order to be  
on the golf course today, the following rules will apply:

- ◇ Spectator **MUST** be with a Green Fee paying golfer(s)
- ◇ Spectator will **NOT** be hitting shots, chips or putts on the golf course
- ◇ Pro-shop staff **MUST** be aware of your intent to be on the golf course
- ◇ **MUST** have equal or greater number of golfers than spectators
- ◇ Spectator **MUST** be 12 years of age or older
- ◇ **MUST** stay in close proximity of golfing group

Name: (Please print) \_\_\_\_\_

Signature: \_\_\_\_\_ Rec #: \_\_\_\_\_ Tee Time: \_\_\_\_\_

DT DV EM GV PB SD TR (please circle) Staff Initial: \_\_\_\_\_

## 11. NO TRESPASSING-PRIVATE PROPERTY!

- Deer Valley, Grandview, Trail Ridge, Pebblebrook, Desert Trails, Echo Mesa and Stardust are all properties that are owned and operated by the Recreation Centers of Sun City West and are used for the sole purpose of Golf. Despite what you may have been told, heard around the community or from realtors, the golf course properties do not belong to owner members of the RCSCW.
- We ask that **all owner members and their guests** of the Recreation Centers of Sun City West **respect** the **private property** of **residents** and of the **RCSCW properties**.
- Especially when courses are closed, it is extremely important not to enter the courses for **safety** reasons such as: the maintenance being performed using special equipment, watering schedules, special chemicals/seed that may be applied, cart paths/turf that has been torn up for modification or repair, etc.



### **NO TRESPASSING & NO PETS**

**Trespassing is defined as anyone on Golf Course Property at anytime day or night, that has not checked in and paid the daily green fee or cart fee.**

- \* **NO** Walkers, Runners or Pet exercising
- \* **NO** Bicycles, Tricycles or Unicycles
- \* **NO** Skateboards, Scooters or Roller blades

**SCW Golf Courses are NOT to be used for:**

- \* Fishing or wading in the ponds
- \* Playing games with children or pets
- \* Playing a few extra holes of golf

## 12. TALKING GOLF – KSCW 103.1 Radio Station

Tuesday at 5 p.m. and Encore Friday at 6 p.m.

**News and events about golf in Sun City West Hosts: Pat O’Hara & Dave Arend.**

Do you love golf? Then you’ll love “Talkin’ Golf.” It’s a weekly show on KSCW 103.1 hosted by golf operations manager Pat O’Hara and Da Golf Lab owner Dave Arend. Catch up on Sun City West golf news and events and learn golfing tips.

## 13. DONATIONS

Green Team is always looking for gently used golf equipment for men and women (i.e. golf clubs, bags, balls, ball mark repair tools, etc.) Donations may be made to Golf Operations, Monday – Friday from 7am-3pm.

## 14. CLINICS

# GOLF LESSONS AVAILABLE


BY  
**MARK ADCOCK**  
623 544 6470  
(MGR. OF PEBBLEBROOK & STARDUST)

**NIBBY MUSSO**  
623 544 6509  
(MGR. OF DEER VALLEY, DESERT TRAILS, & ECHO MESA)

**PATRICK O’HARA**  
623 544 6499  
(GOLF OPERATIONS MANAGER.)

**MICHAEL WILLIAMS**  
623 544 6037  
(MGR. OF GRANDVIEW & TRAIL RIDGE)

**PAUL GRUCZA**  
623 544 6037  
(GOLF OPERATIONS COORDINATOR)




**Instruction Fees**

**Golf Clinics**  
Maximum 6 students, \$15.00/person/clinic/60 minutes

**Private Lessons**  
45 minutes of instruction for 1 person . . . \$40.00  
60 minutes of instruction for 2 people . . . \$60.00

**How to Book a Lesson**  
Go to [suncitywest.com](http://suncitywest.com)  
Click - Golf  
Click - Golf Lessons & Clinics  
Click - Lesson and Clinics (on top of page)  
Click - Lessons & Clinics (under Quick Links, right side)  
Book your lesson!



## 15. GOLF HANDICAP – What is the Sun City West Kochina Golf Club?

The **Sun City West Kochina Golf Club** is a group of male and female residents of Sun City West interested in establishing a golf handicap but do not want to join an established men’s or women’s club. There is an annual AGA membership fee of \$45+. If you already have a current index and GHIN number, the AGA will transfer your scores to the Sun City West-Kochina Golf Club.

Please follow the **steps below** to join the **Sun City West Kochina Golf Club**. If you have any questions, please contact Kevin Wurgler, the club administrator at 480-540-6572 or email [kevin@workwithwurglers.com](mailto:kevin@workwithwurglers.com).

1. Visit [www.azgolf.org](http://www.azgolf.org)
2. Click on **MEMBERSHIP**
3. Click on **JOIN**
4. Under **MEMBER CLUB**, click on **CLUB DIRECTORY**
5. Club Name: type in **Kochina**, when the club appears, click on **JOIN/RENEW**, click on **PROCEED** follow the prompts/questions.

## **16. RCSCW MEMBER CREDIT ACCOUNT**

### **Different Ways to pay for Guest Fees, Greens Fees and Pro Shop Purchases**

You can put credit on your Member Card in any increment using cash or credit. There is no expiration on these funds. This may be done by:

- Call or come to the **Member Services Window** Monday-Friday 8am to 3pm 623.544.6100
- Call or go to any **Golf Pro Shop** 7 days a week 7am to 5:30pm
- Go to any of the **4 Recreation Centers Monitor Stations** with a credit/debit card **ONLY**, **no cash** accepted. You may pay for a 1-day use pass at any of the monitor stations or add money to your member account.

**Accepted Credit Cards: Visa, MasterCard and Discover**

## **17. Text Notifications for Course Closures or Delays for Weather & Maintenance**



- **or** go to [suncitywest.com/golf](http://suncitywest.com/golf) and scroll down the page until you see the following information:

**Sign Up below for text notifications regarding Course Closures, Delays for Weather & Maintenance**

When a text notification is sent to all subscribers, the text message will always include the golf course weather hotline. PLEASE CLICK ON THE **WEATHER HOTLINE PHONE NUMBER (623-544-6175)** for additional information.